



Associated Mechanical Engineers

Table of Contents

History	3
Vision and Mission	3
Message from the Founders	4
Memberships	5
Projects.....	9
List of Projects	81
Description of AME Work Organization	88
Profiles	90
Estimated Cost of Major Projects.....	95
For more information:	100

History

Associated Mechanical Engineers (AME) is an Engineering firm that deals with the Design and Supervision of all Electro-Mechanical works.

After working in top engineering offices in the Middle East, Mr. Mohammad and Mr. Jamal saw the need to bring a high level of engineering quality work to their country of origin. In 1994 Mohammad and Jamal Mehio collaborated and founded Associated Mechanical Engineers (AME) in Beirut.

Since then the family owned business grew from a five-person company to a leader in its profession, employing a team of over thirty engineers and designers that are qualified experts in their fields.

Vision and Mission

Mission

We attend to our clients by meeting their needs for impeccable results in design. Our performance is enabled by our ongoing improvement, learning, and employee empowerment.

Vision

To establish ourselves amongst the best in providing consulting solutions, as well as to be acknowledged as leaders of our profession in the Middle East region.

Message from the Founders

Thank you for considering the Associated Mechanical Engineers as a partner in the path towards achievement in your business. Our Electro-Mechanical engineering services offer you the ability to receive high quality products, whilst dealing with a professional team of engineers.

AME is a company built on a practice of professionalism and excellence. Our team represents a diversity of engineering fields, Electrical and Mechanical, and is empowered with skill, ability, knowledge, as well as up to date in all engineering matters. The team at AME has grown and collaborated in the attainment of a unique single goal; providing excellent quality work for all our customers.

Since 1994 our practices have evolved with technological advances and contemporary engineering techniques, yet the vision of engineering excellence that inspired us remains unchanged. Our determination for achievement has enabled us to become members of several world-class engineering communities and receive certificates for providing first-rate quality work.

We welcome you to explore our differentiating qualities and invite you to join us in providing for you needs.

Mohammad Mehio & Jamal Mehio

Memberships

AME is registered in the court of commerce of Lebanon and is operated under the leadership of senior engineers with more than thirty years of experience in the fields of Electro-Mechanical Engineering.

AME Engineers are members of the Lebanese syndicate of Engineers and Architects as well as Major International Societies that deal with various Electromechanical Systems. The International Societies are:



American Society of Heating, Refrigeration and Air-conditioning Engineers (ASHRAE)



The society was established as an international organization in 1894. Acting in the cause of serving of humanity and promoting sustainable world through research, standards writing, publishing and continuing education; ASHRAE works on advancing heating, ventilation, air conditioning and refrigeration. (<http://www.ashrae.org>)

American Society of Mechanical Engineers (ASME)



ASME is a non-profit membership organization founded in 1880. ASME "enables collaboration; knowledge sharing, career enrichment, and skills development across all engineering disciplines, toward a goal of helping the global engineering community develop solutions to benefit lives and livelihoods." (www.asme.org)

Green Building Certification Institute (LEED)



"The Green Building Certification Institute (GBCI) is a third-party organization that provides independent oversight of professional credentialing, and project certification programs related to green building. GBCI is committed to ensuring precision in the design, development, and implementation of measurement processes for green building performance (through project certification) and green building practice (through professional credentials and certificates)." (www.gbci.org)

Federation of Consultants from Islamic Countries



In 1986 the Federation of Consultants from Islamic Countries (FCIC) was founded in Istanbul. Economic, social, cultural, health, urban and environmental domains are directly affected by the federation's activities and objectives, which deal with consulting. The Federation shows the importance of the activity of consultation, its embedment, and impact on our cultures, through the representation of the business. The Federation directs its efforts to support and develop profession in Islamic Countries. (<http://www.fcic-org.com/>)

National Fire Protection Association (NFPA)



The NFPA was established in 1896 as an international nonprofit membership. Its charge was to provide codes and standards, research, training, and education in order to relieve the world from the burdens of fire and other hazards on the quality of life.

The NFPA publishes and distributes over 3000 consensus codes and standards developed in order to reduce the chances and outcomes of fire and other risks. Thus giving the NFPA a title of "a leading advocate of fire prevention and an authority on public safety" (<http://www.nfpa.org/>)

Services

Consulting is not just any task performed at AME; it is a valued duty because through consulting we provide our clients with answers and ideas, it is how we show our support to our clients.

Our experience in different fields of Electro-Mechanical engineering as well, as the use of the latest technological software has helped us gain vast expertise in Electro-Mechanical design. Thus we are able to accommodate our workings to any project and provide our clients with superior quality results.

Supervision is also one of the *important* tasks provided by AME. We are committed to seeing through all the projects at every step, and ensuring the overall quality of the construction.

AME services cover a wide range of activities including:

- Preliminary designs
- Detailed working drawings
- Value engineering
- Bill of Quantities
- Specifications
- Conditions of Contract
- Analysis of Tender
- Supervision of Construction
- Material approval and Procurement
- Shop Drawings
- Work Schedule
- Supervising the Testing and Commissioning Process
- Final Handover to Clients

AME provides its services in the fields of:

- Heating, Ventilating and Air-conditioning
- Plumbing
- Fire Protection
- Medical Gases

- Fuel Oil, Gasoline and LPG Gas
- Steam Systems
- Irrigation Systems
- Pumping Stations
- Building Management Systems
- Low Voltage Power Network
- High Voltage Power Network
- Control Systems for Environmental Projects
- Lighting Systems
- Low Current Systems

The team of consultants has been involved in a wide range of projects that cover different field of Electro Mechanical Engineering such as:

- Hospitals
- Universities
- Hotels
- Residential buildings
- Office buildings
- Palaces
- Mosques
- Military bases
- Residential compounds
- Airports
- Public building
- Factories
- Power Plants
- Desalination Plants
- Sewage Treatment Plants
- Pumping Stations

Projects

AME has been able to partake in a wide array of projects and different types of buildings. This ability has allowed for AME and its team of engineers to expand their knowledge and ability, gain immense experience in new areas, and acquire achievements.

Below are a few selected projects to show a sample of our accomplishments and capabilities:

Airports

Tabuk Airport (Tabuk , KSA)

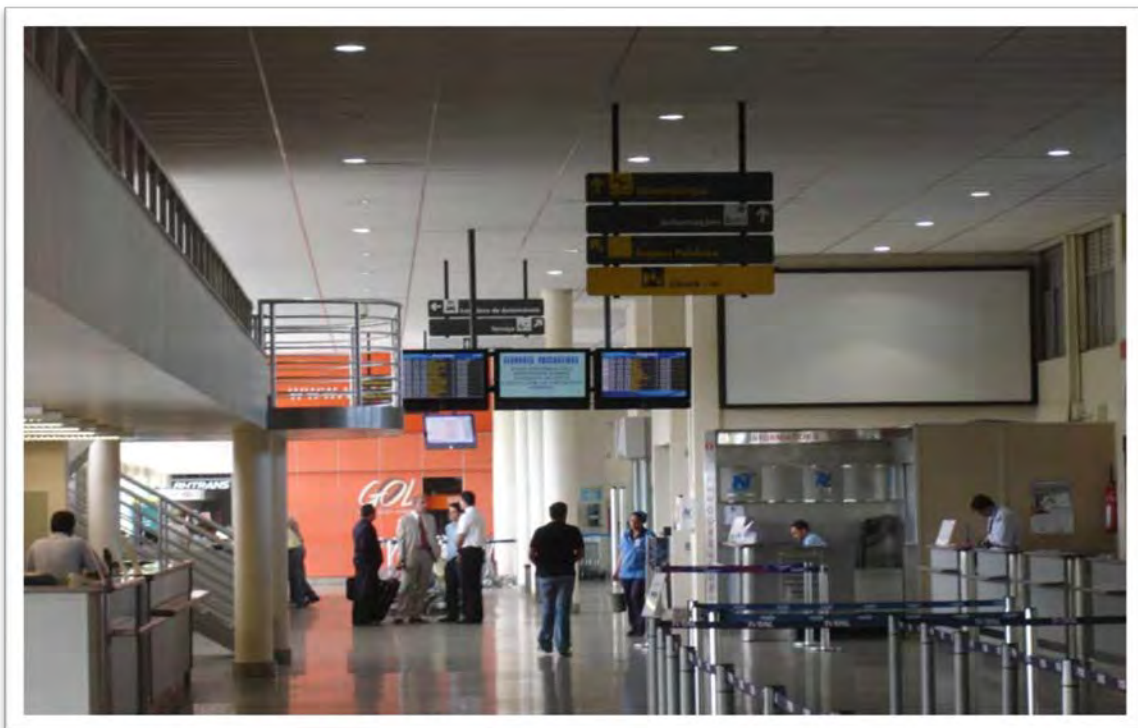




Middle East Airlines (Beirut, Lebanon)



The Prince Bin Abdul Aziz Airport (Madinah, KSA)



Hospitals

American University of Beirut Medical Center (AUBMC, Beirut-Lebanon)



St. George Hospital (Beirut-Lebanon)





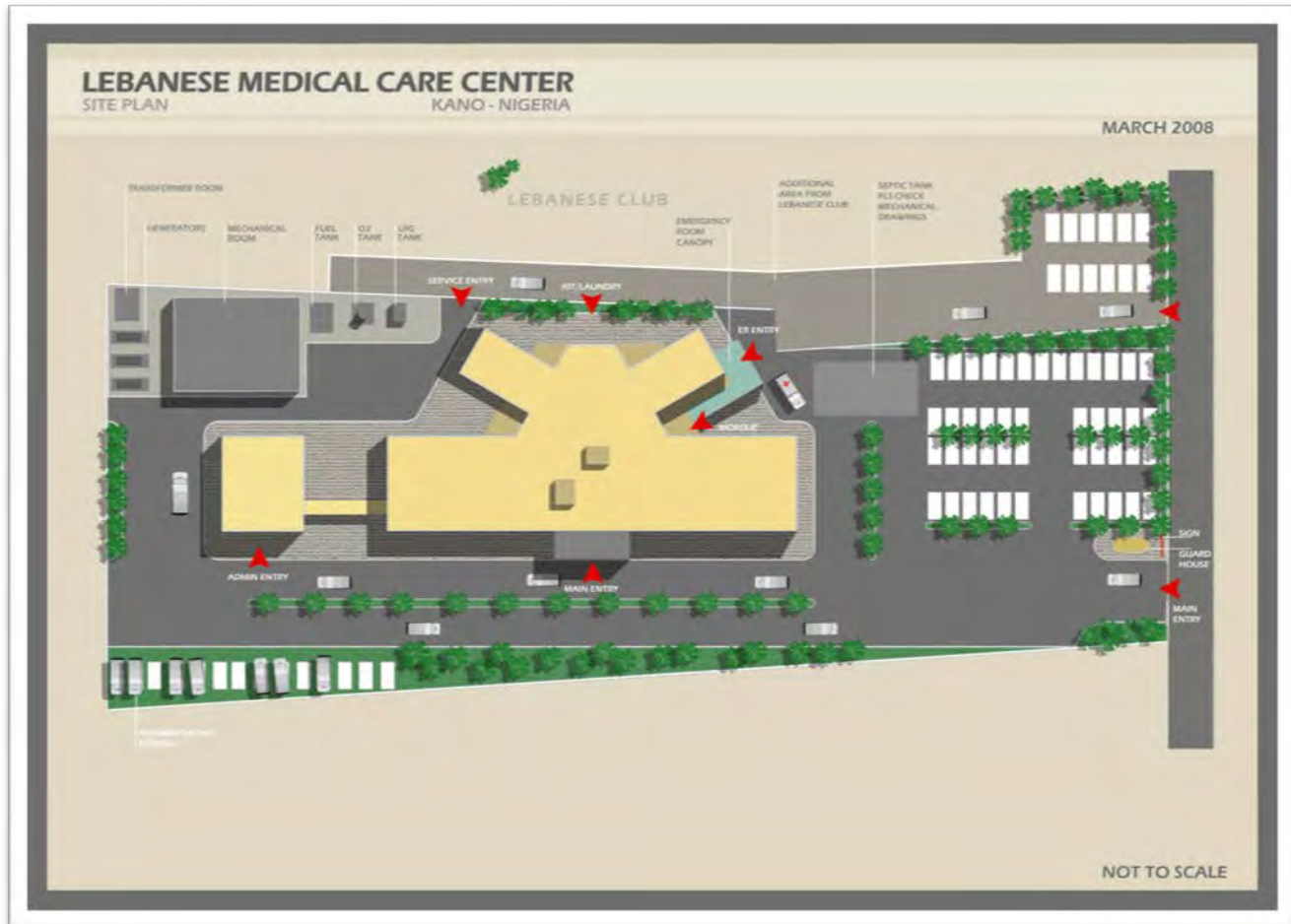
King Khaled Hospital (KSA)



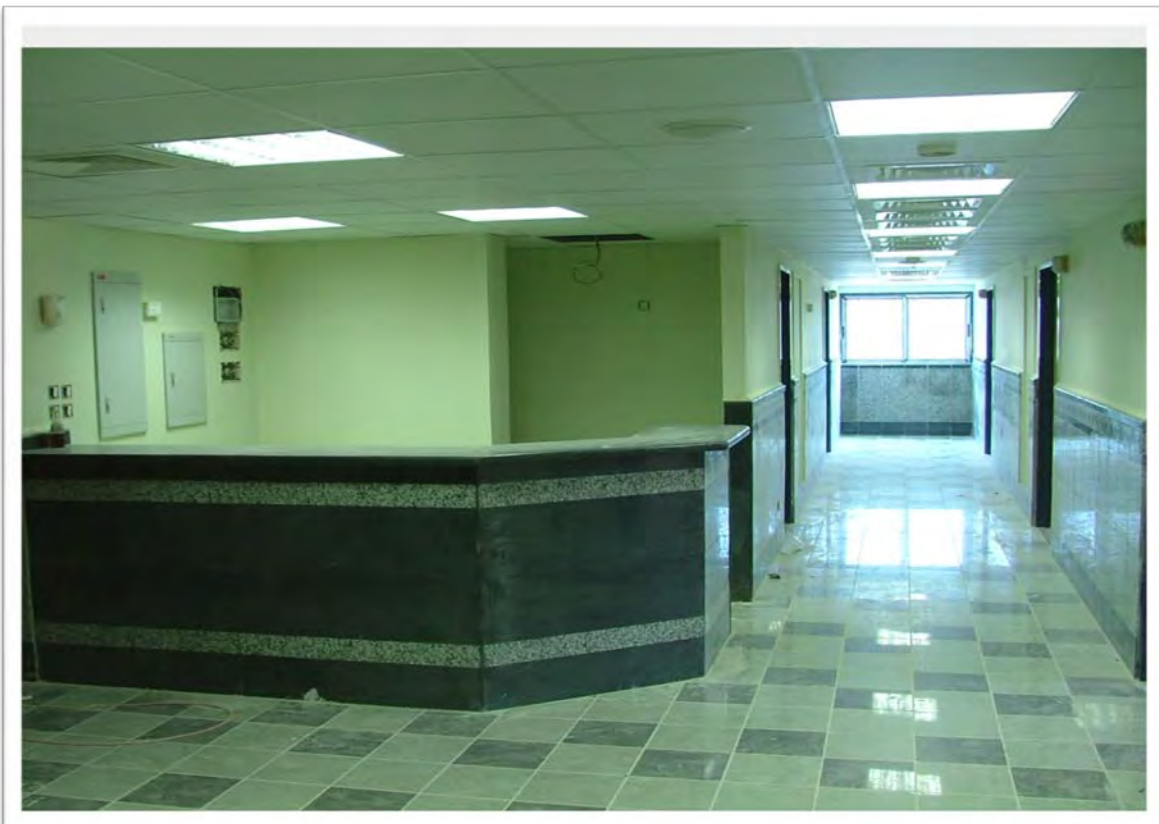
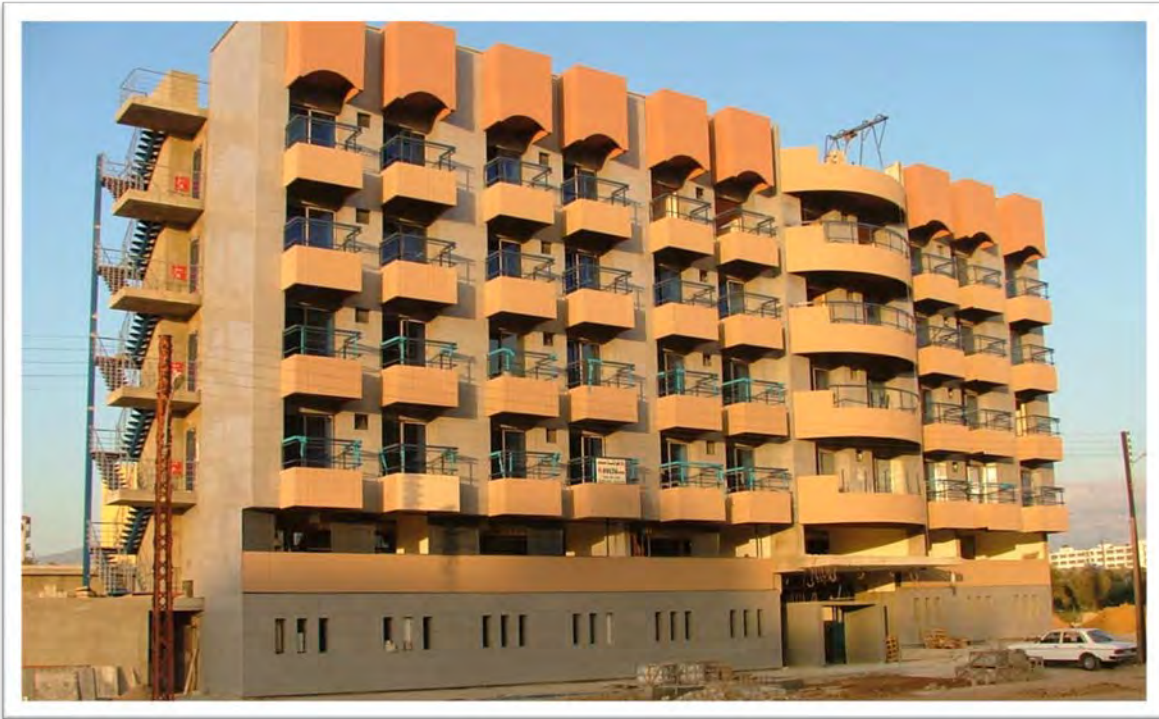
Rafic Hariri University hospital (BGUH) (Beirut, Lebanon)



Lebanese Medical Center (Kano, Nigeria)



Dar Al Shefa (Beirut, Lebanon)



Dar Al Aytam (Beirut, Lebanon)

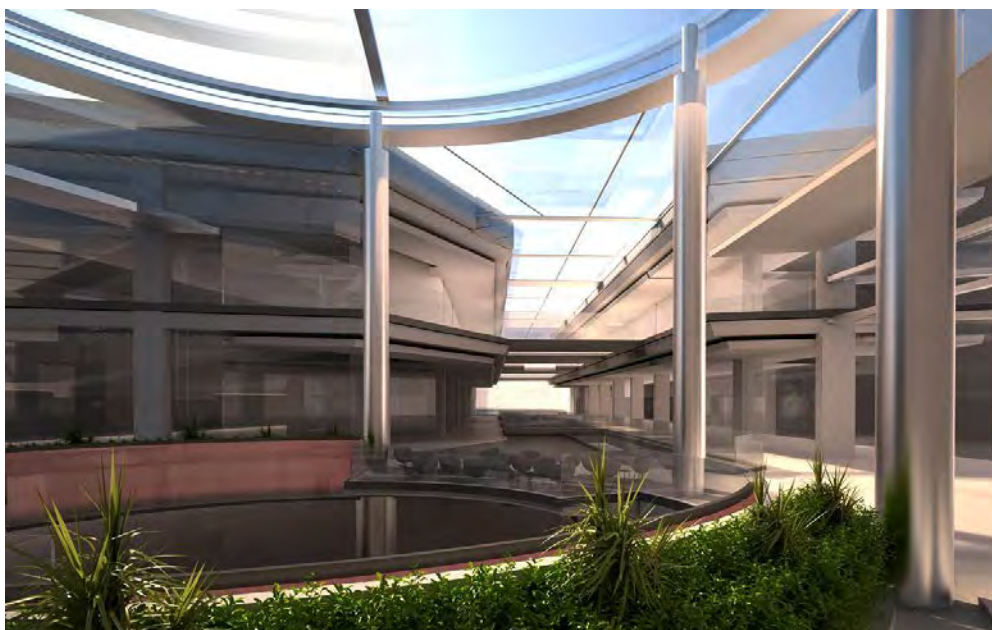


Dar Al Ajaza (Beirut, Lebanon)



Malls

Shweifat Mall – Lebanon



Beirut Souks Lots U&V-Lebanon



Beirut Souks Lots S&T-Lebanon

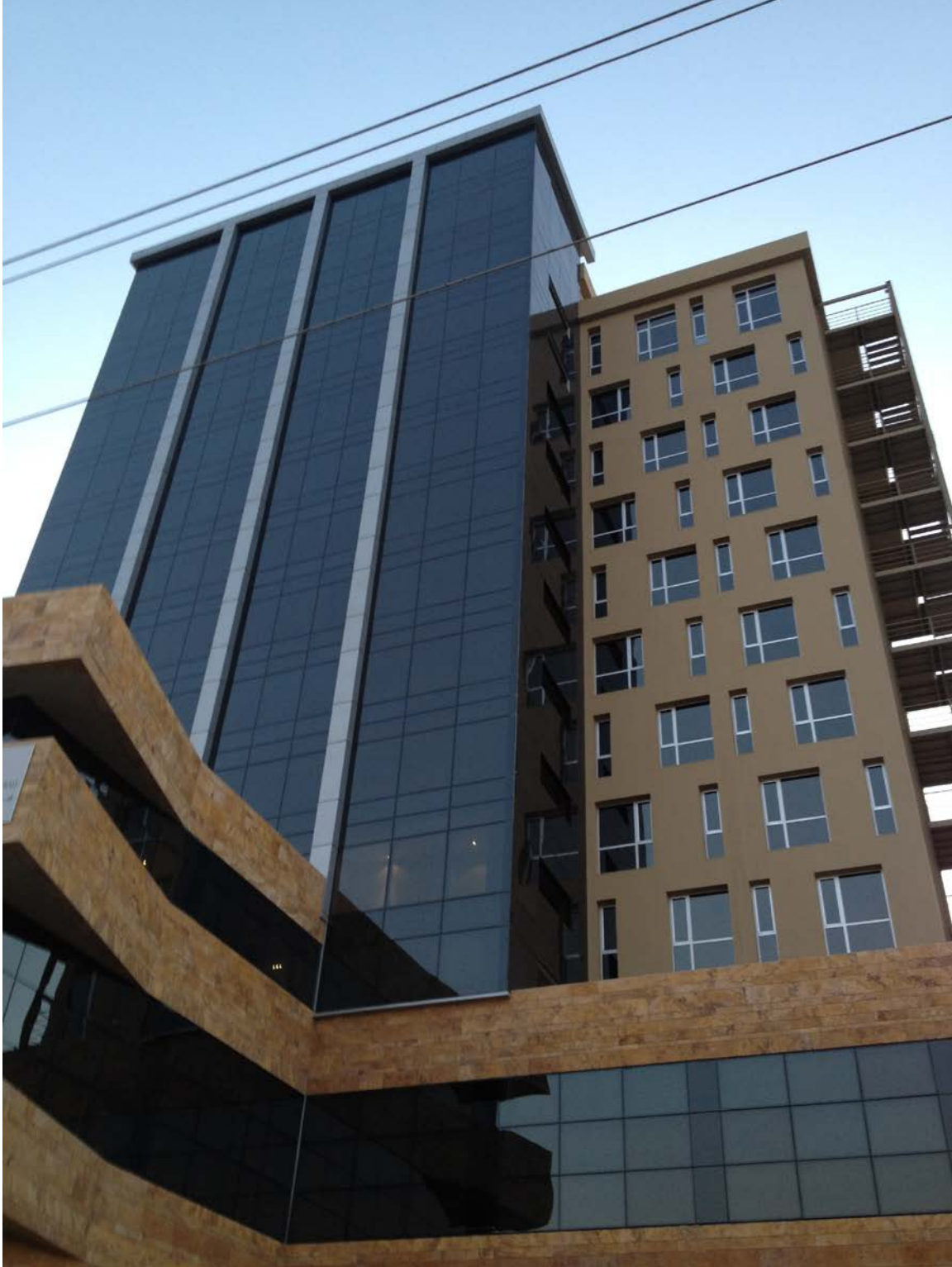


Hotels

Dalfa Tower-Beirut, Lebanon



Erbil 4 Seasons



La Cigale Hotel Qatar



Jeita Country Club



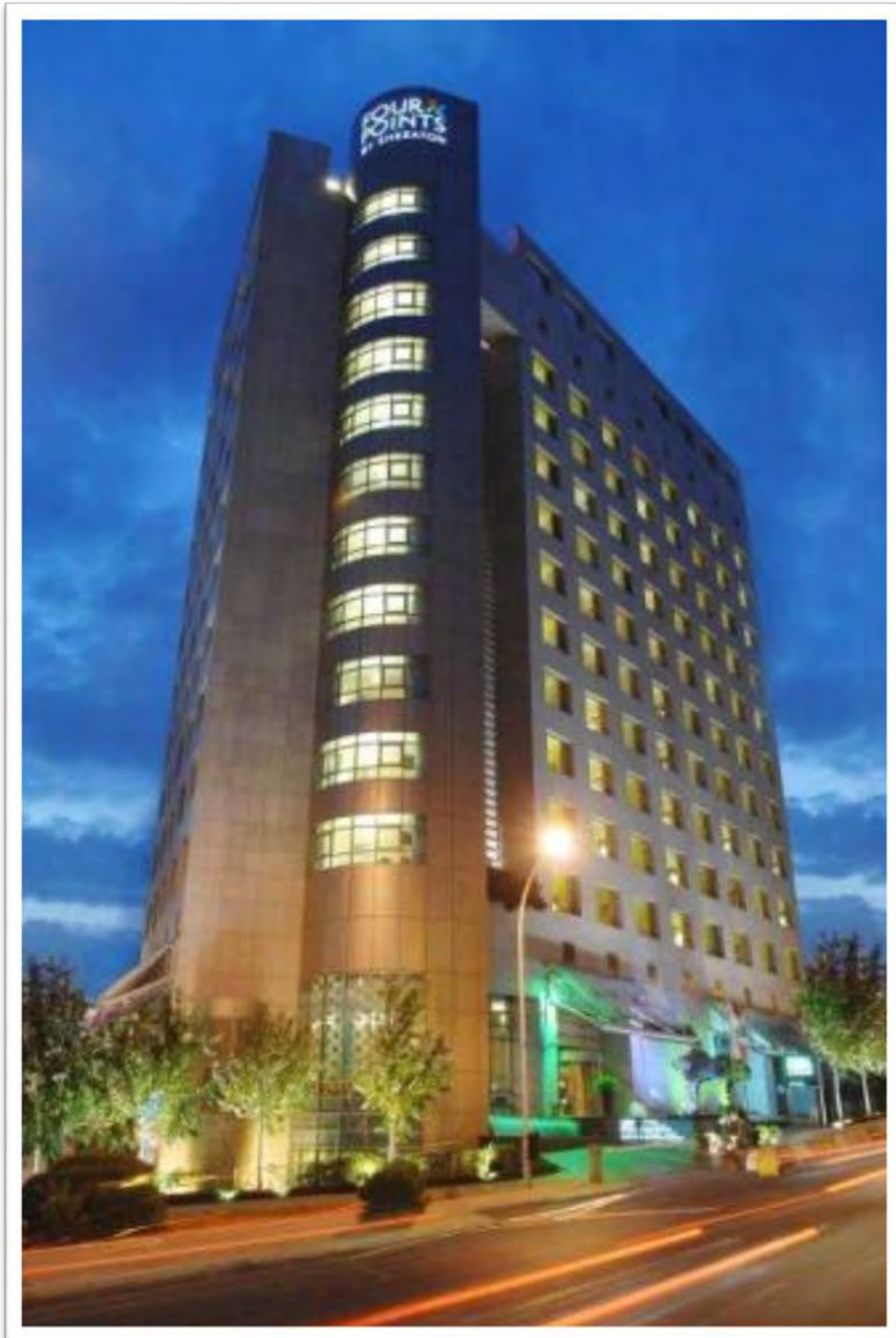
Baabdat Resort (Baabdat, Lebanon)



Spa Jordan



Four Points Sheraton Hotel (Beirut, Lebanon)



Mosques

AlShafee Mosque



The Omari Mosque (Beirut, Lebanon)



Palaces and Villas

Fansa Villa Faqra-Lebanon



Chiaty Villa



SOUTH-WEST VIEW

CHIATY RESIDENCE - GIZA
25.11.2009



NORTH-EAST VIEW

CHIATY RESIDENCE - GIZA
25.11.2009

Mr. Maher Abu Ghazali Villa (Faqra, Lebanon)



Dayekh Residence



Rive Gauch Residence



Sursuk 237-Residence Building Beirut



LOT 477 Saifi – Beirut



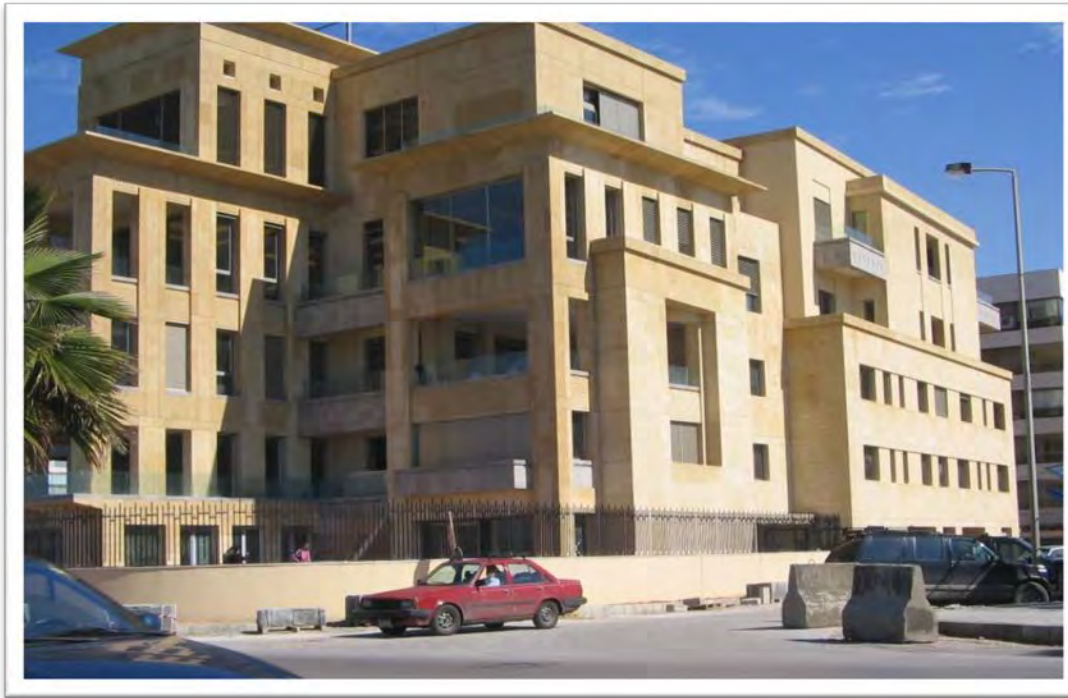
AW3628 Ashrafiye Abdulwahab – Beirut



FKH-LOT Number 1286-Beirut



Kassar Residence (Beirut, Lebanon)



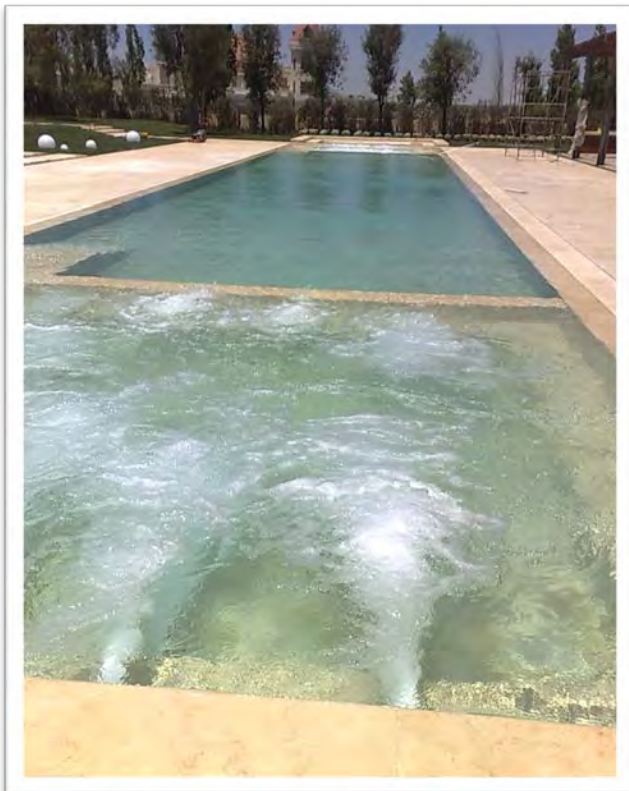
Sirsok Residence (Lebanon)



Al Shaya Villa (Lebanon)



Villa Abu Ghazaleh (Jordan)



Villa Baalbaki (Lebanon)



Villa Ghandour (Labenon)



Villa Oweiny (Lebanon)



Prince Nawwaf Residence (Riyadh, KSA)





INDUSTRIAL

DOTS Printing Establishment (Bshamoun, Lebanon)



Public Buildings

Traffic Management Center (Beirut, Lebanon)



Pension Fund (KSA)



Residential Building

Samira Mis (Beirut, Lebanon)



Solidere 1333 (Beirut, Lebanon)



Towers

Sail Tower-Jeddah KSA





3 Beirut – LOT 1397





Bay Tower



Gemmayzeh Village (Beirut, Lebanon)



The Beirut Tower (Beirut, Lebanon)



Bliss 330 Tower



Spears 1810-Beirut



Trabaud Tower- LOT 1804



Verdun Heights Tower



Accent 1383 Tower (Lebanon)



Sakiet Tower (Beirut Lebanon)



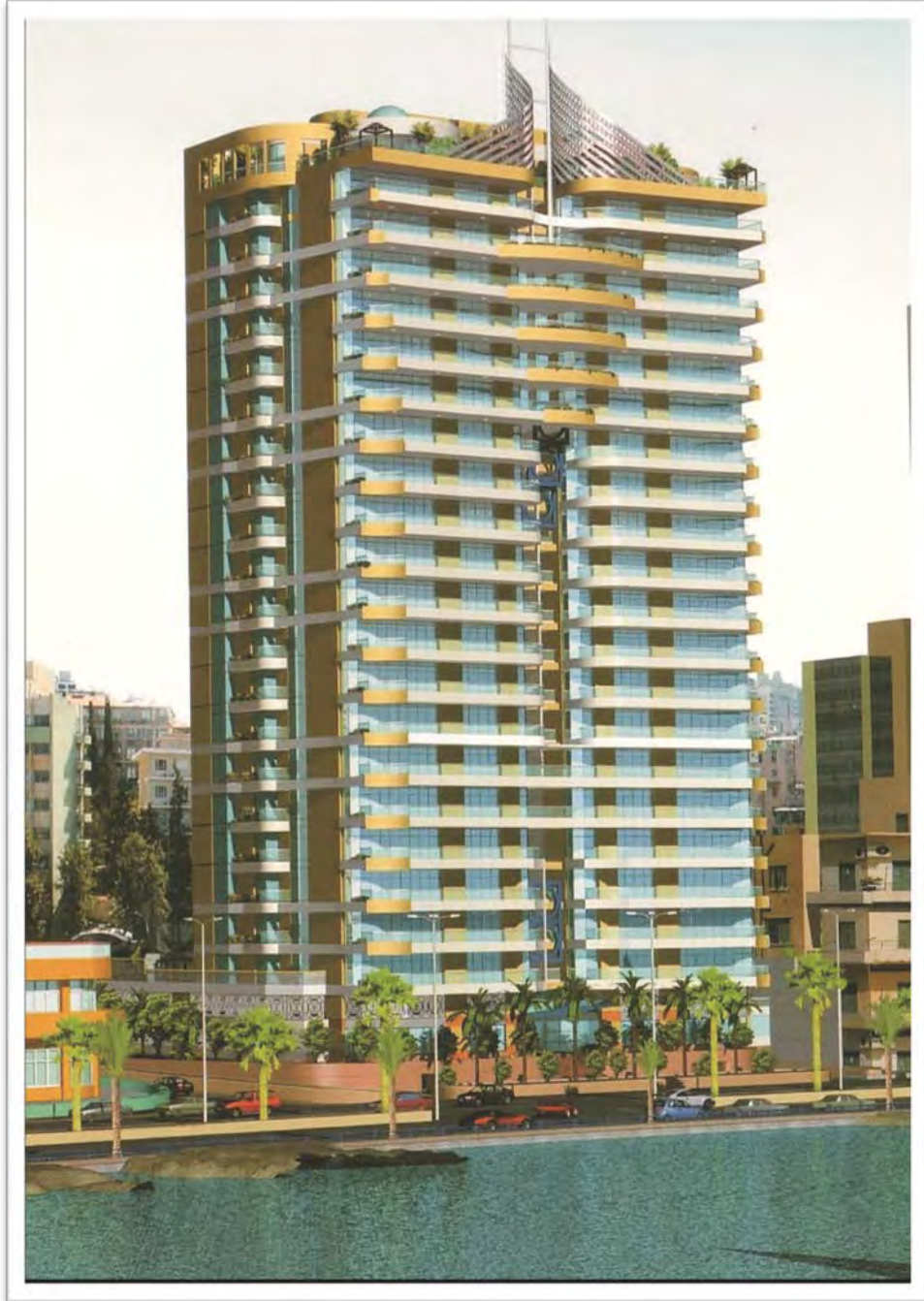
Bahri Gardens Tower (Beirut, Lebanon)



Mathaf 4184 Tower (Beirut, Lebanon)



Horizon Tower (Beirut, Lebanon)



Town and Dib Towers (Beirut, Lebanon)



Platinum Tower (Beirut-Lebanon)



Khan Shatry Tower (Kazakhstan)



Achrafieh Tower (Beirut, Lebanon)



Railways

The Saudi Rail Way (KSA)



Universities

The American University of Beirut (Beirut, Lebanon)



The American University of Beirut (School of Nursing)



Lebanese American University (LAU, Beirut-Lebanon)



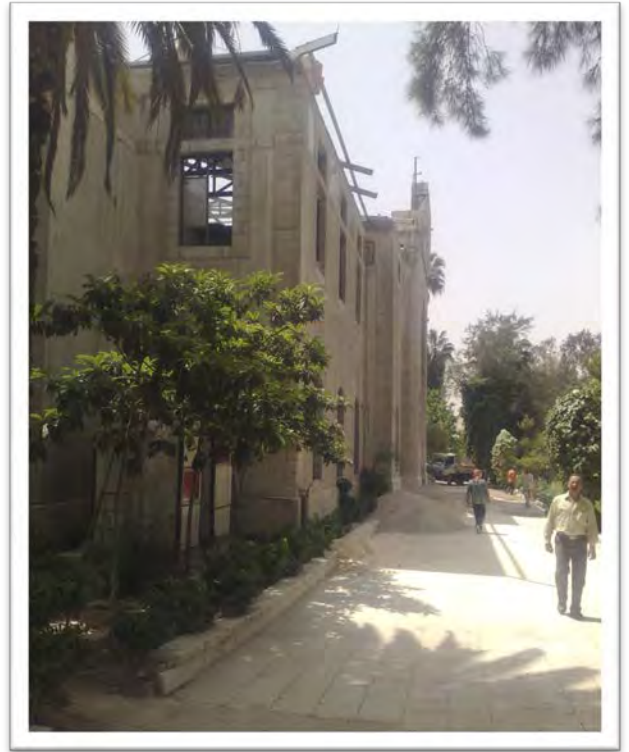
Lebanese American University FREM Civic Center (LAU, Byblos-Lebanon)



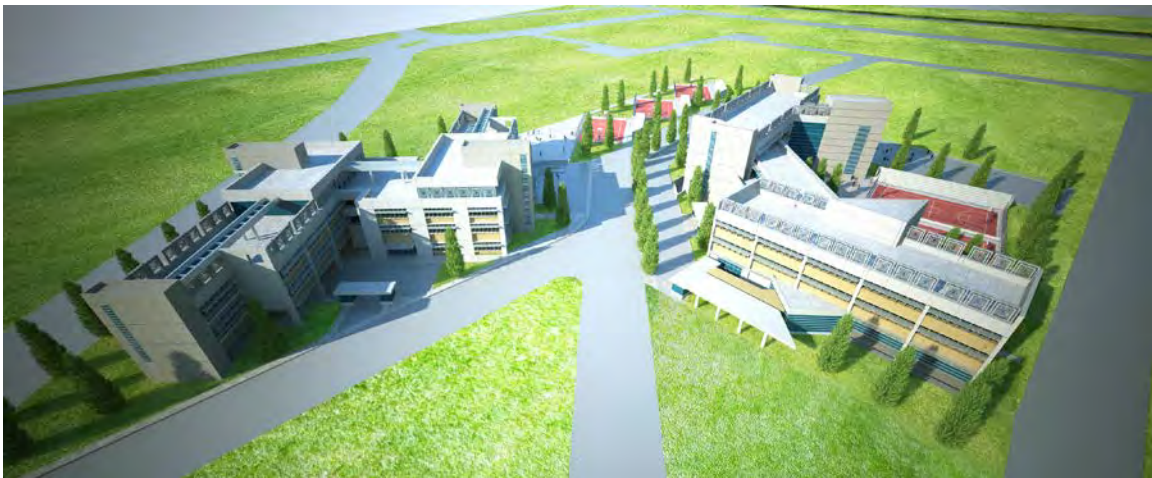
Beirut Arab University (Dibbiyeh-Lebanon)



University of Damascus (Damascus-Syria)



Ben Rashed School



Khalifa Ben Zayed Al Nahian School-Saida



List of Projects

List of hospital projects

Designed by Associated Mechanical Engineers "AME":

- 1 Makassed General Hospital Renovation - Beirut
- 2 Beirut General University Hospital (500 beds) - Beirut
- 3 ST. George Hospital (400 beds) Main Bldg - Beirut
- 4 ST. George Hospital Power House - Beirut
- 5 ST. George Hospital Phase II Renovation of old buildings
- 6 King Khaled Hospital - Jeddah (Central Chiller Plant)
- 7 Dar El Shefa Hospital - Tripoli
- 8 Dar Al Ajaza Hospital Renovation - Beirut
- 9 Renovation of Albarbir Hospital - Beirut
- 10 American University of Beirut Medical Center/ New Chillers Plants - Beirut
- 11 American University of Beirut Medical Center/ New Fire fighting Plants - Beirut
- 12 American University of Beirut Medical Center- Private Clinics - Beirut
- 13 American University of Beirut Medical Center- Renovation of 4th, 7th & 8th floors.
- 14 American University of Beirut Medical Center- Renovation of P3 Cell Lab
- 15 American University of Beirut Medical Center Breast Cancer Center
- 16 American University of Beirut Medical Center PET Center
- 17 Sulaimaneyah Hospital (400 beds) - Iraq
- 18 Nigeria Hospital (40 beds)
- 19 International Medical Center (150 beds)-Syria
- 20 Lumi Dent Center for Dentistry - Beirut
- 21 Medrar Medical Center – Choukine, South Lebanon, (200 Beds).

Designed by Jamal Mehio (Khatib & Alami) :

- 22 Tabuk Maternity Hospital
- 23 Maternity Joumblat Hospital - SIBLINE

Designed by Mohammad Mehio (Diyar Consultants):

- 24 Public security hospital - Riyadh
- 25 VIP hospital (35,000 m2 built-up area) - Riyadh
- 26 Cardiac hospital (15,000 m2 built-up area) - Riyadh

ASSOCIATED MECHANICAL ENGINEERS

LIST OF MAJOR EXECUTED TOWERS PROJECTS (up to 2015)

<u>Item</u>	<u>Project</u>	<u>Client</u>	<u>Type</u>
1	The Sail Tower, Jeddah - KSA	Al Saad - BESIX	Residential & Hotel Tower
2	Rive Gauche Tower - Lot 3527 - Ashrafieh- Lebanon	Ayman Sanyoura	Residential Tower
3	Dalfa Tower Lot 733- Beirut- Lebanon	NGA / DALFA	Residential Tower
4	University Tower- Beirut, Lebanon	Owners of University Tower	Residential Tower
5	Bliss 330 Tower, Beirut- Lebanon	A & H - Haddad	Residential tower
6	Al Kamel Tower, S237, Beirut- Lebanon	Batimat	Residential Tower
7	Park Sioufi, Beirut- Lebanon	Sadek Sawwaf	Residential Tower
8	LOT 1858 - Spears, Beirut Lebanon	Asya	Residential Tower
9	LOT 477 - Saifi Tower, Beirut- Lebanon	Batimat	Residential Tower
10	LOT 1397- 3 Beirut Towers (Solidere) Beirut- Lebanon	Samir Khairallah & Partners	Residential Towers
11	LOT 1810 Spears Tower	Batimat	Residential Tower
12	LOT AW3628 - Ashrafieh, Beirut- Lebanon	Batimat	Residential Tower
13	Trabaud Tower, Beirut- Lebanon	Batimat	Residential Tower
14	Al Racha TOWER (Bliss, Beirut)	Tahseen Khayat	Residential Tower
15	Beirut Tower, Beirut- Lebanon	Samir Khairallah & Partners	Residential Tower
16	Al Aryam Tower, Doha- Qatar	Khatib & Alami	Commercial Center
17	Horizon Tower, Beirut- Lebanon	Talal Al Kurdi	Residential Tower
18	Al Nahda Tower - Sharjah	TNQ	Tower
19	The Platinum Tower Supervision, Beirut- Lebanon	NGA / The Platinum Tower	Residential Tower
20	BAY TOWER/ 1422 Hoson – Beirut Central District	Samir Khairallah & Partners	Residential Tower
21	Pearl - Qatar (Value Engineering)	Nassar Engineering	Residential Tower
22	Haqabani Tower	Mohammad Hamweye	Residential Tower
23	LOT 173 Tower Ashrafeye, Beirut Lebanon	BATIMAT	Residential Tower
24	The Heights- LOT 1165 - Sakiet, Beirut- Lebanon	BATIMAT	Residential Tower
25	LOT 1442 - Ein El Tineh, Beirut- Lebanon	BATIMAT	Residential Tower
26	LOT 4148 - Mathaf, Beirut- Lebanon	BATIMAT	Residential Tower
27	Verdun Heights, Beirut- Lebanon	Asya Architects	Residential Tower

28	Gymmayzeh Village (Mdawar), Beirut Lebanon	Samir Khairallah & Partners	Residential Towers Complex
29	Momtaz Tower lot 1240/1241, Lebanon	Arcade Group	Residential Tower
30	Le Cypres Tower- Adlieh, Lebanon	AH / Mona Hallak	Commercial Tower
31	Park Avenue Tower - Beirut, Lebanon	Diyar	Residential Tower
32	Bahri Tower, Beirut - Lebanon	Dr. Said Jazairi	Residential Tower
33	Sioufi Tower, Beirut - Lebanon	Mimar	Residential Tower
34	Candle Tower, Erbil- Iraq	Elei Pierre Sabbagh	Tower/ Mall
35	Golden Tower (Value Engineering) Jedda-KSA	Al Saad	Residential Tower

ASSOCIATED MECHANICAL ENGINEERS
LIST OF MAJOR EDUCATIONAL EXECUTED PROJECTS (up to 2015)

Item	PROJECT TITTLE	CLIENT	TYPE OF PROJECT
1	Lebanese University- Alfanar	AbdulWahed Shehab	University
2	Gezairi Foundation	Tabbara & Dauk Architects	Educational
3	St. Lukes Center	Khatib & Alami	Educational
4	Dar Al Aytam School	Wissam Jabr	School
6	L.A.U. Library & Business School bldg - Beirut Campus	Samir Khairallah & Partners	University School bldg
7	L.A.U. Frem Civic Center	Samir Khairallah & Partners	Univiversity
8	AUB - New Women Dorms	AUB-FAWZI SABA	University
9	Lebanese University Chweifat- school of Engineering	Sulaiman Haddad	University
10	AUB - Laundry Building	AUB	University
11	School of Yanta	Team International	School
13	Jafet Library	AUB-Ph.P	Library
14	AUB Bechtel- Engineering School Bld.	AUB- FPDU	University
17	BAU - Dibbeyeh Campus - Lebanon	Dr Said Jazairi	University School bldgs & site
18	United Arab Emirates University New Campus PPP Development Project	Farouk Sheikh	University
19	AUB - MAIFAIR BLDG, Lebanon	AUB-FPDU	Hospital
20	BAU - Tripoli Compus - Lebanon	Dr Saed Jazairi	University School bldgs & site
21	AUB Infrastructure Utility Tunnel	AUB- FPDU	Infrastructure
22	Al Ahleya School, Beirut - Lebanon	Bawader - Mohammad Adra	School
23	Al Hayat International School -Afak, Aramoun - Lebanon	Mohyideen Harb	School
24	Bin Rashid School /ISWA - SAIDA	Azmi Fakhouri Consultants	School
25	AUB BLISS 507 Building	Fadi Fawwaz	University
26	AUB - Nicely Hall Building	Fadi Fawwaz	University
27	AUB - DTS BLDG / MAIN BLDG- RENOVATION	Bawader- Mohammad Adra	University
28	AUB POST HALL	Bawader- Mohammad Adra	University
29	AUB - DTS - Electronic Lab FACILITIES Bldg Relocation	Bawader- Mohammad Adra	University
30	AUB - DTS - Animal Care Facilities (ACF)	Bawader- Mohammad Adra	University
31	AUB - Architecture School Bldg	Bawader- Mohammad Adra	University
32	AUB - ENVIROMENTAL CORE LAB	Bawader- Mohammad Adra	University
33	Qatar University- Student Affairs	Khatib & Alami	University
34	Qatar University-New College of Law	Khatib & Alami	University

ASSOCIATED MECHANICAL ENGINEERS
LIST OF MAJOR EXECUTED MALLS PROJECTS(until 2015)

<u>Item</u>	<u>Project</u>	<u>Client</u>	<u>Type</u>
1	Sari Mall, Jaddah - Saudi Arabia	Saudi Dyar Consultant	Mall
2	Hassawi Mall, Dammam - Saudi Arabia	Khatib & Alami	Mall
3	Chweifaf Mall, Chweifaf- Lebanom	Wakim Enterprise	Mall
4	ABC Mall Verdun, Beirut- Lebanon	Khatib & Alami	Mall
5	Candle Mall, Erbil- Iraq	Elie Pierre Sabbagh	Mall/ Tower
6	Beirut Souks Lots S & T, Beirut- Lebanon	Samir Khairallah and Partners	Mall
7	Beirut Souks Lots U & V, Beirut- Lebanon	Samir Khairallah and Partners	Mall
8	Sanaa Mall, Yemen	Adel Kadi	Mall

List of Hotels DESIGNED BY ASSOCIATED MECHANICAL ENGINEERS "AME"

Hotel Title	Location	Task	Architect	No. of Guest Rooms	Total Area m2
Kings Hotel	Beirut - Lebanon	Design & Supervision	Joy Chahwan	40	3,000
Dunes - Holiday INN	Beirut - Lebanon	Design & Supervision	Dr. SaedJazairi	136	35,000
Haram Hotel	Madinah - K.S.A	Design	Saudi Diyar Consultant	260	48,000
Army Officers Club & Hotel Monro	Beirut - Lebanon	Supervision	Samir Khairallah& Partners	120	16,000
Rotana Hotel _ Hazmeieh	Beirut - Lebanon	Design & Supervision	Dr. Adel Kadi/ Joy Chahwan	175	15,000
Mercure Hotel	Sanaa - Yemen	Design	Dr. Adel Kadi/ Joy Chahwan	70	5,000
Sofitel Hotel	Taiz - Yemen	Design	Dr. Adel Kadi/ Joy Chahwan	115	30,000
Kempenski Hotel	Beirut - Lebanon	Design	Samir Khairallah& Partners	72	15,000
Coral Beach - Sheraton Hotel	Beirut - Lebanon	Design	Kocache	120	20,000
El Manamah Residence	Beirut - Lebanon	Design	Malek Kaki	135	11,000
Sheraton 4 points-Verdan	Beirut - Lebanon	Design/Supervision	Samir Khairallah& Partners	134	19,000
Madinah Hotel Plot 131	Madinah - K.S.A	Design	Saudi Diyar Consultant	300	60,000
Madinah Hotel Plot 136	Madinah - K.S.A	Design	Saudi Diyar Consultant	150	35,000
Leisure Hill (Royal Hotel)	Dbayeh - Lebanon	Design	Khatib&Alami	250	100,000
Albustan Hotel	Dubai - UAE	Design	Khatib&Alami	220	40,000
Sheraton Hotel-dammam	Jeddah - K.S.A.	Design	Khatib&Alami	320	50,000
Beryt Hotel	Beirut - Lebanon	Design	DR. SaedJazairi	42	4,000

Multifunctional Hotel (Iacegal)	Qatar	Design	Batimat	240	48,000
Jabal Al Kaba Hotel	MECCA - KSA	Value Engineering	MazenBizri/ Dar Al Handasa	1900	130,000
Rouche Hotel	Beirut - Lebanon	Design	Khatib&Alami	262	60,000
Express Hotel	Amman	Design	MunaBatayneh	216	26,000
4 Season Hotel	Erbil	Design	MunaBatayneh	118	13,000
Candle Hotel & Furnished apartment & Office building	Erbil	Design	Elei Pierre Sabbagh	200 rooms+1 10 aparts	52,000

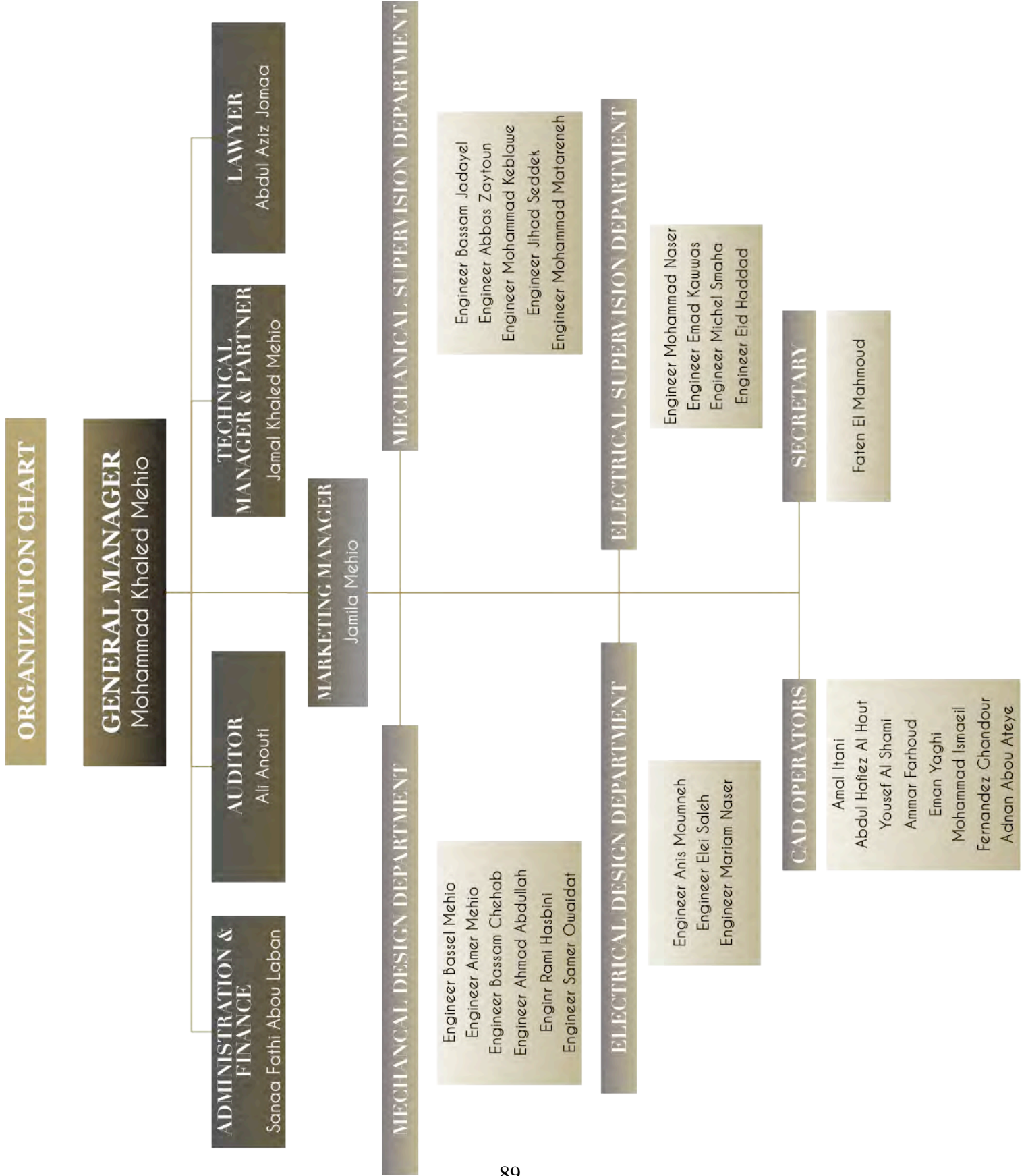
Description of AME Work Organization

At AME we understand that top of the line work comes from professional accomplished employees.

All AME consultants are specialized in the use of latest engineering software, and have vast experience in all modern techniques in producing their engineering documents.

The team of consultants has been involved in a wide range of projects that cover different fields of Electro Mechanical Engineering. The Extensive knowledge and experience of the engineers at AME has captured high praise for their technical ability and their quality of work.

The work provided by the team at AME, having over 30 years of work experience, has earned an esteemed reputation among many architectural offices throughout the Middle East region. Accordingly AME assures any client the ability in providing the best quality of work within a concise period of time.



Profiles

Mohammad Khaled Mehio General Manager & Senior Mechanical Engineer

Professional Experience

Mohammad Mehio is the General Manager of Associated Mechanical Engineers (AME), in 1994 Mr. Mehio founded AME in Beirut.. Preceding Mr. Mehio's position at AME, he was able to build up his expertise throughout his employment at Saudi Diyar Consultants (SDC), OGER, AMCO International and Associated Consulting Engineers (ACE). Mr. Mehio has been involved in mechanical engineering consulting, encompassing detailed Engineering Design of HVAC, Smoke control systems, Plumbing, Fire protection, Medical gases, Swimming pools, Fuel and oil systems, Irrigation, Steam and pumping stations, Instillation of chilled water systems, Heating water systems, and various mechanical works.

Mr. Mehio has been able to partake in in mechanical works of Hotels, Hospitals, Villas, Residential Buildings, Towers, Universities, and Centers... His responsibilities include design and supervision of major projects, as well as administrative works and office development and management.

Experience

Sulaimaneyah Hospital (400 Beds)	Iraq
Nigeria Hospital (40 Beds)	Nigeria
International Medical Center (150 Beds)	Syria
Tabuk Maternity Hospital	Tabuk, KSA
MaternJoumblat Hospital	Sibline, Lebanon
American University Of Beirut Medical Center (AUBMC)	Beirut, Lebanon
St. George Hospital	Beirut, Lebanon
King Khaled Hospital	KSA
Rafic Hariri University Hospital (Bguh)	Beirut, Lebanon
Lebanese Medical Center	Kano, Nigeria
Dar Al Shefa	Beirut, Lebanon
Dar Al Aytam	Beirut, Lebanon
Dar Al Ajaza	Beirut, Lebanon
Makassed General Hospital Renovation	Beirut, Lebanon
Beirut General University Hospital (500 Beds)	Beirut, Lebanon
St. George Hospital (400 Beds) Main Bldg	Beirut, Lebanon
St. George Hospital Power House	Beirut, Lebanon
King Khaled Hospital	Jeddah, KSA
Dar El Shefa Hospital	Tripoli, Lebanon
Dar Al Ajaza Hospital Renovation	Beirut, Lebanon
Renovation Of Albarbir Hospital	Beirut, Lebanon
Kings Hotel	Beirut, Lebanon
Dunes Holiday Inn	Beirut, Lebanon
Haram Hotel	Madinah, K.S.A
Army Officers Club & Hotel Monro Hotel	Beirut, Lebanon

Rotana Hotel _ Hazmeieh
Mercure Hotel
Sofitel Hotel

Beirut, Lebanon
Sanaa, Yemen
Taiz, Yemen

Kempinski Hotel
Coral Beach
El Manamah Residence
Sheraton 4 Points
Madinah Hotel Plot 131&136
Leisure Hill (Royal Hotel)
Sheraton Hotel
Jabal Al Kaba Hotel
Rouche Hotel
4 Season Hotel
Malabo Hotel
Beirut Tower
Horizon Tower
Turquoise Tower
Platinum Tower
Bay Tower/ 1422 Hoson
Lot 137 Tower
Lot 327 Tower
Khan Shatry Tower
Lot 1442, 4898, 4148, 1397, 1165
Baalbaki Villa
Ghandour Villa
Mr&MrsOueini Villa
Villa Ainab
Meshref Villa
Daftari Villa
Private Villa
Faqra Villa
Moheisen Villa
Oman Central Prison
Aljabal Project Church
The Omari Mosque
Al Rahman Mosque
Tripoli Mosque
Alley Mosque
Bhamdoun Mosque
The Saudi Rail Way

Beirut, Lebanon
Beirut, Lebanon
Beirut, Lebanon
Beirut, Lebanon
Madinah, K.S.A
Dbayeh, Lebanon
Jeddah, KSA
Mecca, KSA
Beirut, Lebanon
Erbil
Guinea
Solidere, Lebanon
Lebanon
Lebanon
Lebanon
Solidere, Lebanon
Ashrafeye, Lebanon
Ashrafeye, Lebanon
Kazakhstan
Ain El Tineh, Lebanon
Beirut, Lebanon
Ansarieh, Lebanon
Beirut, Lebanon
Beirut, Lebanon
Beirut, Lebanon
Amman
Chemlan, Lebanon
Beirut, Lebanon
Jeddah, K.S.A.
Oman
Beirut, Lebanon
Beirut, Lebanon
Beirut, Lebanon
Tripoli, Lebanon
Alley, Lebanon
Bhamdoun, Lebanon
KSA

Affiliations

Lebanese Syndicate Of Engineers and Architects - Beirut, Lebanon
American Society Of Heating Refrigeration And Air Conditioning Engineers (ASHRAE)
American Society of Mechanical Engineers (ASME)
National Fire Protection Association (NFPA)

Education

American University of Beirut – Beirut, Lebanon
Bachelor in Mechanical Engineering, 1975

Jamal Khaled Mehio Manager, Partner& Senior Mechanical Engineer

Professional Experience

Jamal Mehio is a Partner and Manager at Associated Mechanical Engineers (AME); in 1994 Mr. Mehio cofounded AME in Beirut. Preceding Mr. Mehio's position at AME, he was able to build up his expertise throughout his employment Khatib & Alami. Mr. Mehio has been involved in mechanical engineering consulting, encompassing detailed Engineering Design of HVAC, Plumbing, Fire Protection, Swimming Pools, Irrigation, Pumping Stations, Fuel Oil and Gasoline Systems and Preparing Complete Tender Documents, and various mechanical works.

Mr. Mehio has been able to partake in in mechanical works of Hotels, Hospitals, Villas, Residential Buildings, Towers, Universities, and Centers... His responsibilities include design and supervision of major projects, as well as administrative works and office development and management.

Experience

Tabuk Maternity Hospital	KSA
Joumblat Hospital	Sibline,
Lebanon	
Sultan Qaboos University, Oman	Oman
AUB College Hall	Beirut,
Lebanon	
Rehabilitation Of Lebanese University, College Of Science	Lebanon
Lebanese American University, Library & School Of Business	Beirut,
Lebanon	
Beirut Arab University, Campus In Debbeyeh.,	Lebanon
Beirut Arab University	Tripoli,
Lebanon	
Sheraton Hotel Extension	Jeddah, Ksa
Holiday Inn At Les Dunes Center	Beirut,
Lebanon	
Rotana Hotel	Lebanon
Manamah Residence	Beirut,
Lebanon	
Coral Beach	Lebanon
Bukhater High Rise Building	Dubai, UAE
Sheraton Hotel Renovation	Dammam,
KSA	
Al Sahab High Rise Building	Beirut,

Lebanon	
Horizon Residential Tower	Beirut,
Lebanon	
Platinum Residential Tower	Beirut,
Lebanon	
Al Aryam Tower	Doha, Qatar
Al Fateh Mosque	Beirut,
Lebanon	
Al Bastah Mosque (Rehabilitation)	Beirut,
Lebanon	
Beirut Arab University Car Park	Beirut,
Lebanon	
Martyr's Square Car Park	Beirut,
Lebanon	
Cocody Cola Tunnels	Beirut,
Lebanon	
Patchi Main Offices	Beirut,
Lebanon	
Zakat Office Bldg	Beirut,
Lebanon	
Le Dunes Commercial Center	Beirut,
Lebanon	
Al Sahab Commercial Center	Beirut,
Lebanon	
BHV Hypermarket	Beirut,
Lebanon	
Al Hassawi Shopping Mall	KSA
Verdun Shopping Mall	Beirut,
Lebanon	
Tabouk Airport Renovation	Tabouk, KSA
Sharurah/ Rafah/Qaisumah Airports	KSA
Saudi Rail Way Passenger Stations Type (A) & (B)	KSA
Madina Airport Renovation	KSA
Crystal Factory	KSA
Albaba Sweet Factory	Saida
Lebanon	
Patchi Factory	Beirut,
Lebanon	
Cpc Industrial Park	Syria
Edible Oil Refining Factory	Sharjah, UAE
Um El Sulum Sewage Pumping Station	KSA
Lucy Water Pumping Station	Bikaa,
Lebanon	
Beirut Arab University Dabbeyeh Campus	Beirut,
Lebanon	
Beirut Arab University Tripoli Campus	Beirut,
Lebanon	
Central Prison	Oman

Affiliations

Lebanese Syndicate Of Engineers and Architects - Beirut, Lebanon
American Society Of Heating Refrigeration And Air Conditioning Engineers (ASHRAE)
American Society of Mechanical Engineers (ASME)
National Fire Protection Association (NFPA)

Education

American University of Beirut – Beirut, Lebanon
Bachelor in Mechanical Engineering, 1980

Estimated Cost of Major Projects

Project Name	Date	Scope	Estimated Cost (US\$)
Beirut General University Hospital 50,000(m2 - 500beds)	1996 /1997	Design	20,000,000.00
Army Officers Club and Hotel –Beirut	1997	Supervision	1,400,000.00
Municipality of Tripoli	1997 /1999	Design /Supervision	500,000.00
Dunes –Beirut 50,000(m2)	1995 /1997	Design /Supervision	6,000,000.00
UNESCO Palace –Beirut	1996 /1997	Design /Supervision	1,500,000.00
Artizana –Beirut	1996 /1997	Design	400,000.00
30,000(Alsahab Building –Beirut m2)	1995 /1997	Design	2,000,000.00
Medical Health Club –Beirut	1995	Design	150,000.00
Alshaya Commercial Center –Beirut	1996	Design /Supervision	750,000.00
Lebanese University –Alfanar	1996 /1997	Supervision	2,000,000.00
Mena House Complex	1994	Design	1,200,000.00
Stad Municipal –Beirut	1997	Shop Drawings	150,000.00

Beirut General University Hospital - Auxiliary Bldg.'s –Beirut	1996/1997	Design/Shop Drawings	4,000,000.00
AdibNadar Villa	1994/1995	Design /Supervision	500,000.00
Solider lot 1154 –Beirut	1996/1997	Design	600,000.00
Solider lot 1155 –Beirut	1996/199	Design	750,000.00
Beirut Souks (Lots S,T,V&U)	1997 /1998	Design /Supervision	5,000,000.00
Novotel Hotel	1997	Design/ Supervision	5,000,000.00
Jeita Country Club	1998/1999	Design /Supervision	9,000,000.00
LAU- Frem Civic Center -Jbeil	1998/1999	Design /Supervision	750,000.00
LAU Business School &Library Bldg.	1998/1999	Design /Supervision	3,200,000.00
Dar Al Aitam	1998/1999	Design	1,500,000.00
AUB- New Women's Dormitory	1999	Design	300,000.00
Kempinski Beirut Hotel	1999	Design /Supervision	.1,500,000 00
Makassed Hospital Renovation	1999	Design	1,000,000
Power House –AUB Farm	1999	Design	300,000
Clinic Building AUB- Hospital	2000	Design	2,000,000
Coral Beach –Sheraton Hotel	2000	Design	4,000,000
Laundry Building –AUB	2000	Design	250,000

American University Hospital (AUH) New Chillers Plant	2000	Design	250,000
AUH -New Fire Fighting Plant	2000	Design	200,000
Hyundai- Headquarters	2000	Design /Supervision	750,000
Rida Said Conference Center	2000	Design /Supervision	1,000,000
Sheraton 4points- Verdan	2000-2003	Design /Supervision	3,500,000
ST. George Hospital 400(beds)	2000-2004	Design /Supervision	10,000,000
ST. George Hospital Power House 9000KVA	2000-2004	Design /Supervision	3,000,000
Building 39 –AUB Campus	2001	Design	60,000
Omary Mosque	2001	Design /Supervision	400,000
Alshaya Commercial Center -Spinneys	2001	Design	1,500,000
Beirut Tower	2003-2004	Design/ Supervision	9,000,000
Jafet Library -AUB	2002	Design	400,000
Beirut Arab University	2002	Design	2,000,000
Dar El Shefa Hospital	2003	Design	5,000,000
Suleimaniah Hospital -Iraq	2003	Design	4,000,000
Sheraton Hotel -Dammam	2003	Design	3,500,000

LAU Beirut –Business School	2003-2004	Supervision	3,200,000
Al Aryam Tower Doha-Qatar	2003-2004	Design	5,000,000
Platinum Tower	2003-2004	Client representative & Supervision	20,000,000
University of Damascus	2004-2005	Design	1,000,000
AUB Private Clinics Building 23	2004-2006	Design & Supervision	2,500,000
LEBANESE MEDICAL CARE CENTER - Nigeria	2006-2007	Design	6,000,000
Gemmayzeh Village Residential and commercial Beirut - Lebanon	2011/ongoing	Design & Supervision	40,000,000
3beirut Towers Residential and commercial Beirut - Lebanon	2009/ongoing	Design & Supervision	25,000,000
Verdun Heights Residential and commercial Tower Beirut - Lebanon	2009-2014	Supervision & redesign	10,000,000
Beirut North Souks (S&T blocks) Beirut - Lebanon	2011/ongoing	Design & Supervision	10,000,000
ST. George Hospital Phase II	2013/ongoing	Design & Supervision	
ABC Verdun Beirut - Lebanon	2013/2014	Mechanical Design	24,000,000
Chweifat Mall Lebanon	2013	Mechanical Design	18,000,000
AUB MC ABC MC Pet Center	2012/ongoing	Redesign and supervision	2,000,000
AUB - DTS Building	2010/ongoing	Design & Supervision	10,000,000
Entertainment center and restaurants	2007-2009	Design	15,000,000

(U&V) – Solidere Beirut souks			
Bay Tower – Mina El Hosn Beirut	2006-2011	Design & Supervision	16,000,000
Pension Fund – Riyadh, KSA	2005-2006	Shop drawings	18,000,000
Four Seasons Hotel– Erbil, Iraq	2006-2007	Design & Supervision	7,000,000
Wazzan Residential Tower Beirut - Lebanon	2010/ongoing	Design & Supervision	12,000,000
Bahri Residential Tower Beirut - Lebanon	2008-2012	Design & Supervision	7,500,000
Bliss Tower Hotel and Commercial complex Beirut - Lebanon	2012-2014	Supervision & redesign	5,500,000
Saifi Tower Residential and commercial	2013-2014	Design & Supervision	8,000,000
Sursock Tower Residential and Commercial	2013-2014	Design & Supervision	10,000,000

For more information:

For more information about AME please contact our head office in Beirut
Tel/Fax +961 1 788139+961 1 788140
ame@ame-consultants.com
www.ame-consultants.com

Thank you for making us your choice in providing services for your projects.

© 2017 Associated Mechanical Engineers. All Rights Reserved.